

Mechanical Gate



Standard

The standard mechanical gate offers an extremely effective yet economical access security solution.

As reliable as it is practical, the mechanical gate is designed to be used in areas to positively indicate the entrance/exit flow and is particularly suited where maximum security is not required.

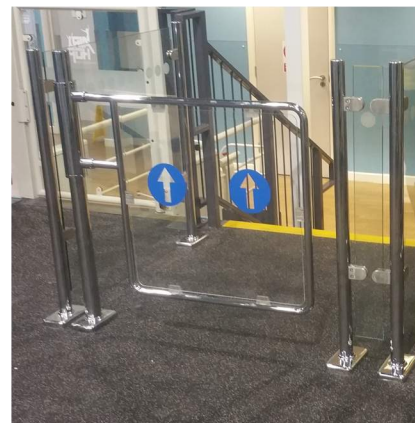
The gate is designed to open through 90 degrees and return to closed position under spring tension.

Design:

- Mild steel body in bright chrome
- 650-1100mm adjustable arms
- Available in either left-hand, right hand or bi-directional configuration

Operation:

- Manual breakout facility in case of emergency use (manual re-set for gate arm breakout)
- 90 degree operation



All Right Now LTD

The Long Barn | Manor Farm Business Park | Appletree Road | Chipping Warden | OX17 1LH
T: +44 (0)1295 66 05 66 E: enquiries@allrightnow.co.uk www.allrightnow.co.uk

