

Vortex 100



Our economy product of our Vortex Full Height Turnstile Series projects both ultimate security combined with the all important value for money, so ideal for construction sites that demand the need for security for protecting loss of equipment on site yet cost effective to justify the expense. It will pay for itself. Full height turnstiles are the ultimate in security and control of foot flow through an entrance/exit point.

This full height turnstile is the ideal choice for either internal or external locations. It has a compact and robust design combined with a cost effective & superior reliable operation. Making it the ideal choice for providing effective control in areas where previously security had been desirable but the cost implications had been unwelcome or prohibitive, whether it is in construction sites, industrial premises, warehouses, transport, airports or stadia.

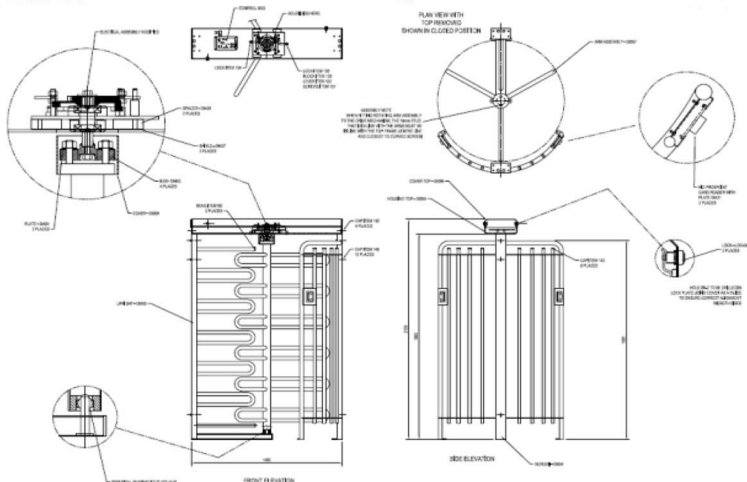
Standard and optional features;

Design:

- Full height turnstile for external or internal use
- Polyester coated steel frame and arms
- Available in powder coated (Black) as standard. Other finishes are optional extras, please ask for details

Operation:

- Manually operated arms
- Available as mechanical only unit or controlled in either or both directions
- Can be controlled via any access control unit which gives out a volt free contact (supplied separately)
- Free rotation on power failure or activation of fire alarm
- Unlocking mechanism adjustable from 2-32 seconds



Order Information

All controlled units are supplied complete with Push Button (Foot Pedal operation is an available option). Other control methods by quotation only.

If controlled unit required, please specify controlled direction, for example controlled entry / free exit.

Please specify at time of order if left hand or right hand unit required.

All Right Now LTD

The Long Barn | Manor Farm Business Park | Appletree Road | Chipping Warden | OX17 1LH
T: +44 (0)1295 66 05 66 E: enquiries@allrightnow.co.uk www.allrightnow.co.uk

